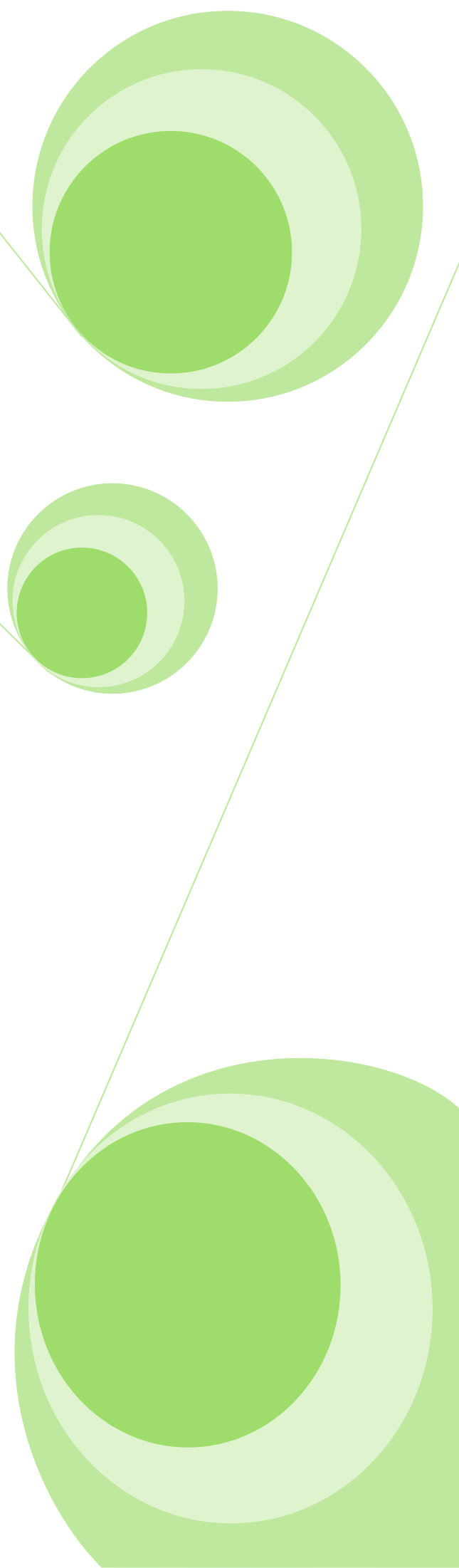


Implementation guide
Ehandel.no format
Invoice and credit note



History

Version	Comment	Author	Date
0.1	Initial version.	Bao Nguyen, Difi	2009-11-09
0.5	Preliminary version.	Bao Nguyen, Difi Olav A. Kristiansen, Difi Sverre Bauck, Difi Petter Sandvik, Edisys Jostein Frømyr, Edisys	2009-12-10
1.0	Final version.	Bao Nguyen, Difi	2010-04-27
1.01	Correction of definitions.	Bao Nguyen, Difi	2010-05-04
1.1	Correction of chapters 3.1.1, 3.1.2, 3.2 Appendices 1, 2 and 5 (new data element, Tax Category, in Allowance Charge) English version Test files	Bao Nguyen, Difi Kristin V. Gulbrandsen, Difi	2011-01-20

INNHold

1	INTRODUCTION	5
1.1	BACKGROUND AND OBJECTIVE.....	5
1.2	TARGET GROUP.....	5
1.3	DOCUMENT STRUCTURE	5
2	DEFINITIONS	7
2.1	DEFINITION OF INVOICE.....	7
2.2	DEFINITION OF CREDIT NOTE	7
2.3	DEFINITION OF ELECTRONIC INVOICE	7
2.4	DEFINITION OF SUPPLIER.....	7
2.5	DEFINITION OF CUSTOMER	7
2.6	DEFINITION OF SELLER.....	7
2.7	DEFINITION OF BUYER.....	7
2.8	DEFINITION OF INVOICE ISSUER	7
2.9	DEFINITION OF INVOICE RECEIVER	7
2.10	DEFINITION OF PAYMENT RECEIVER	7
3	PRINCIPLES AND REQUIREMENTS FOR EHandel.no FORMATS	8
3.1	CONTENT REQUIREMENTS OF EHandel.no FORMATS	8
3.1.1	CONTENT REQUIREMENTS OF AN INVOICE.....	8
3.1.2	CONTENT REQUIREMENTS OF A CREDIT NOTE	10
3.2	VALIDATION	12
3.3	INVOICE PROCESS AND USE OF CEN BII PROFILES	14
3.4	AGREEMENT	14
3.5	RETURN OF INVOICE	14
3.6	ADDRESSING.....	14
3.7	ENVELOPE	15
3.8	FUTURE CHANGES.....	15
4	USE OF SIGNIFICANT ITEMS IN EHandel.no FORMAT.....	16
4.1	USE OF PARTIES	16
4.2	USE OF SUPPLIER AND BUYER REFERENCE	16
4.3	VAT.....	16
4.4	SPECIAL TAX.....	16
4.5	ORDER/BILLING NUMBER	16
4.6	CONTRACT NUMBER	16

4.7	ACCOUNTING COST	17
4.8	APPENDIX	17
5	EXAMLE OF INVOICE AND CREDIT NOTE	18
5.1	INVOICE	18
5.1.1	invoice with Xpath to invoice format	19
5.1.2	Tabel WITH Xpath TO FORMAT AND e2b	20
5.1.3	XML EXAMPLE	22
5.2	CREDIT NOTE.....	26
5.2.1	Credit NOTE With Xpath to the Credit note format	27
5.2.2	table With Xpath to the format and e2B.....	28
5.2.3	XML eXample.....	30
6	APPENDIX.....	32
6.1	APPENDIX 1 – STRUCTURE TABLES.....	32
6.2	APPENDIX 2 – MESSAGE TABLES.....	32
6.3	APPENDIX 3 – CODE LIST	33
6.4	APPENDIX 4 - UBL 2.0 SCHEMA	33
6.5	APPENDIX 5 - XML AND XSLT	33
6.6	APPENDIX 6 - MODEL OF EXCHANGE OF EHANDEL.NO FORMATS	33
6.6.1	DIRECTLY THROUGH THE E-procurement PLATTFORM	34
6.6.2	using a service provider.....	34
6.6.3	WEB INVOICE PORTAL	34
6.6.4	DIRECTLY FROM INVOICE ISSUER TO Access point (AP).....	34
6.7	APPENDIX 7 - IDENTIFIERS.....	35
6.8	APPENDIX 8 – TEST FILES	35

1 INTRODUCTION

1.1 BACKGROUND AND OBJECTIVE

This document has been prepared as part of the project electronic invoice which DIFI (Agency for Public Management and eGovernment) performs on behalf of the Ministry of Government Administration, Reform and Church Affairs. Two important dates were set.

1.7.2011

State agencies and health authorities shall be able to receive invoices electronically in standard format.

1.7.2012

All government agencies (including municipal sector) shall receive electronic invoices in standard format. All businesses shall send electronic invoices in standard format.

This document describes the Ehandel.no format invoice and credit note for electronic exchange between parties. DIFI has chosen to base these formats on CEN BII Core¹ and the implementation syntax is based on the Universal Business Language (UBL)² version 2.0. UBL is a free accessible standard that does not involve licensing costs. The same shall apply to Ehandel.no formats invoice and credit note. Ehandel.no formats will be maintained by DIFI.

The objective of this document is to define a common format for invoices and credit notes and facilitates an efficient introduction and distribution of these formats electronically.

1.2 TARGET GROUP

The target group of this document (hereinafter referred to as implementation guide) is professional and technical personnel who want to send and receive electronic invoices and credit notes. The document can also be used by the system supplier, ERP vendor and messaging provider.

1.3 DOCUMENT STRUCTURE

The document is divided into chapters, sub chapters and appendix.

Chapter 1. A brief introduction describing the background and objective of the document.

Chapter 2. Defines important terms used in the document.

Chapter 3. Describes the principles and assumptions which form the basis for the design of the Ehandel.no format.

Chapter 4. Describes how a number of important elements in the format are used.

Chapter 5. Displaying XML and visualization of invoice and credit note.

Chapter 6. Appendix.

¹ <http://www.cen.eu/cwa/bii/specs/>

² http://www.oasis-open.org/committees/tc_home.php?wg_abbrev=ubl

Appendix 1 describes the structure of invoice and credit note messages.

Appendix 2 describes how computer items in invoice and credit note are used.

Appendix 3 describes code list used in the standards.

Appendix 4 describes UBL 2.0 schema for invoice and credit note.

Appendix 5 describes XML and XSLT of invoice and credit note.

Appendix 6 is about the model of exchange of Ehandel.no formats.

Appendix 7 is about identifiers.

Appendix 8 test files.

2 DEFINITIONS

2.1 DEFINITION OF INVOICE

An invoice is a document which due to accounting technically confirms a sale between a seller and a buyer. The invoice is issued by the seller and the buyer has an obligation to pay this.

2.2 DEFINITION OF CREDIT NOTE

A credit note is a document which cancels all or parts of a bill that has already been sent. A credit note shall have a clear reference to the invoice to which it applies.

2.3 DEFINITION OF ELECTRONIC INVOICE

An electronic invoice is an invoice which is transmitted electronically from the biller to the invoice recipient and which can be imported into the invoice recipient's accounting system and processed electronically.

2.4 DEFINITION OF SUPPLIER

A person or a company that provides goods and services on their own or on behalf of others.

2.5 DEFINITION OF CUSTOMER

Person or organization that purchases a goods or service on their own or on behalf of others.

2.6 DEFINITION OF SELLER

Person or organization that on their own or on behalf of others concludes a contract or a contract transfer of a product, a commodity or a service at an agreed price to the buyer.

2.7 DEFINITION OF BUYER

Person or organization that takes possession of an item or service for payment, at a given price.

2.8 DEFINITION OF INVOICE ISSUER

An invoice issuer is a person or an organization issuing the invoice for goods or services sold on their own behalf, or other's behalf.

2.9 DEFINITION OF INVOICE RECEIVER

An invoice receiver is a person or an organization which on their own or on behalf of others will receive invoices for purchased goods or services.

2.10 DEFINITION OF PAYMENT RECEIVER

A payment receiver is a person or organization receiving payment.

3 PRINCIPLES AND REQUIREMENTS FOR EHANDEL.NO FORMATS

To make it easier to understand the use of standards there are some principles and assumptions that needs to be explained. These points are presented in this chapter.

3.1 CONTENT REQUIREMENTS OF EHANDEL.NO FORMATS

According to Norwegian accounting regulations §§ 5-1-1 to 5-1-8 there are legal requirements for the contents of an invoice and a credit note. The table in chapters 3.1.1 and 3.1.2 describes the content requirement of an invoice and credit note in accordance with CEN BII Core, the Norwegian Accounting Legislation and public demands.

The table below describes the content requirements in the invoice and credit note. “Mandatory” means that the item must remain in the standard. “Recommended” means that the item should be included in the standard if possible.

3.1.1 CONTENT REQUIREMENTS OF AN INVOICE

Content requirements	1. According to UBL 2.0 Schema ³	2. According to CEN BII Core	3. According to Norwegian accounting law	4. According to Norwegian public demands
UBL version identification		Mandatory		
Customization identification		Mandatory		
Profile identification		Mandatory		
Invoice number	Mandatory	Mandatory	Mandatory	
Invoice date	Mandatory	Mandatory	Mandatory	
Currency code (the code must also be set in the currencyID attributes for any amount fields)	Mandatory	Mandatory		
Order number. (Head level)				Recommended
Contract number (Contract reference)				Recommended
Supplier name		Mandatory	Mandatory	
Supplier address		Mandatory	Mandatory	

³ <http://docs.oasis-open.org/ubl/os-UBL-2.0-update-delta.zip>

Supplier country code				Mandatory
Supplier organization number in the Register of Business Enterprises.			Mandatory	
Supplier reference (Our ref.)				Recommended
Customer number (Buyers ID)				Recommended
Buyer's name		Mandatory	Mandatory	
Buyer's address			Mandatory	
Buyer's organization number in the Register of Business Enterprises.				Mandatory
Buyer's reference (Your ref.)				Mandatory
Payment code (Payment means)		Mandatory		
Due date			Mandatory	
Accountnumber (Bank number/ IBAN number)				Recommended
Delivery address			Mandatory	
Delivery date			Mandatory	
KID no. (Payment reference)				Recommended
VAT total		Mandatory	Mandatory	
VAT base per VAT rate on head level		Mandatory	Mandatory	
VAT amount		Mandatory	Mandatory	
VAT category	Mandatory	Mandatory		
VAT percentage on head level		Mandatory	Mandatory	
VAT (Tax scheme)	Mandatory	Mandatory		
Net line amount		Mandatory		
Total amount excluding VAT		Mandatory		
Total amount including VAT		Mandatory		

Total amount to be paid	Mandatory	Mandatory	Mandatory	
Line number	Mandatory	Mandatory		
Supplier article number. (Sellers article number)				Recommended
Description of goods or services on line level. (Name)		Mandatory	Mandatory	
Accounting cost on line level				Recommended
Quantity on line level			Mandatory	
Unit (@UnitCode)				Recommended
Order ref. on line level				Recommended
VAT per cent on line level				Mandatory
VAT category code on line level		Mandatory		
Tax type on line level (VAT is the only legal code)		Mandatory		
Price on line level		Mandatory	Mandatory	
Line amount	Mandatory	Mandatory	Mandatory	
Total line amount		Mandatory	Mandatory	

3.1.2 CONTENT REQUIREMENTS OF A CREDIT NOTE

Content requirements	1. According to UBL 2.0 Schema ⁴	2. According to CEN BII Core	3. According to Norwegian accounting law	4. According to Norwegian public demands
UBL version identification		Mandatory		
Customization identification		Mandatory		
Profile identification		Mandatory		
Credit note number	Mandatory	Mandatory	Mandatory	
Customer number (Buyer's ID)				Recommended

⁴ <http://docs.oasis-open.org/ubl/os-UBL-2.0-update-delta.zip>

Credit note date	Mandatory	Mandatory	Mandatory	
Currency code (code must also be set in the currencyID attributes for all amount fields.)		Mandatory		
Invoice ref.		Mandatory	Mandatory	
Supplier name		Mandatory	Mandatory	
Supplier address			Mandatory	
Supplier country code				Mandatory
Supplier organization number in the Register of Business Enterprises.			Mandatory	
Supplier reference (Our ref)				Recommended
Buyer's name		Mandatory	Mandatory	
Buyer's address			Mandatory	
Buyer's organization number in the Register of Business Enterprises.				Mandatory
Buyer's reference (Your ref.)				Mandatory
VAT total		Mandatory	Mandatory	
VAT base per VAT rate on head level		Mandatory	Mandatory	
VAT amount		Mandatory	Mandatory	
VAT category	Mandatory	Mandatory		
VAT procentage on head level		Mandatory	Mandatory	
VAT (Tax scheme)	Mandatory	Mandatory		
Net line amount		Mandatory		
Total amount excluding VAT		Mandatory		
Total amount including VAT		Mandatory		
Total sum credit	Mandatory	Mandatory	Mandatory	

Line number.	Mandatory	Mandatory		
Supplier article number. (Sellers article number)				Recommended
Description of goods or services on line level. (Name)		Mandatory	Mandatory	
Number			Mandatory	
Unit (@UnitCode)				Recommended
Price on line level		Mandatory	Mandatory	
Line amount		Mandatory	Mandatory	
Total line amount		Mandatory	Mandatory	

3.2 VALIDATION

For optimum flexibility, the messages are validated at different levels and with different focus. We get the following levels in the validation process:

1. UBL 2.0 schema validates the following:
 - Tag name and any attributes must be correctly written and in the right order according to UBL 2.0.
 - All mandatory tag names must be included.
 - The content of an item must have a legal value according to type definition.
2. CEN BII Core Schematron validates in accordance to international requirements specified in CEN BII Core including:
 - Legal codes for currency, country, taxes etc.
 - Logical relationships between information items such as the start date appears before the end date, due date after invoice date, the subtotal must be added to the correct total, tests that factors to be multiplied gets the correct product etc.
3. Norwegian Schematron validates whether the message content meets the requirements in accordance with the Norwegian Accounting Legislation.
4. Ehandel.no Schematron validates whether the message is in accordance with Norwegian public demands.
5. Industry specific Schematron validates specific requirements applicable to each industry. It is up to each industry to establish a validation service on this level.

6. Entity specific validates specific requirements applicable to each entity. It is up to each entity to establish a validation service on this level.

The first four levels of validation will be in accordance to the tables in chapter 3.1. The pyramid below illustrates the different validation levels.

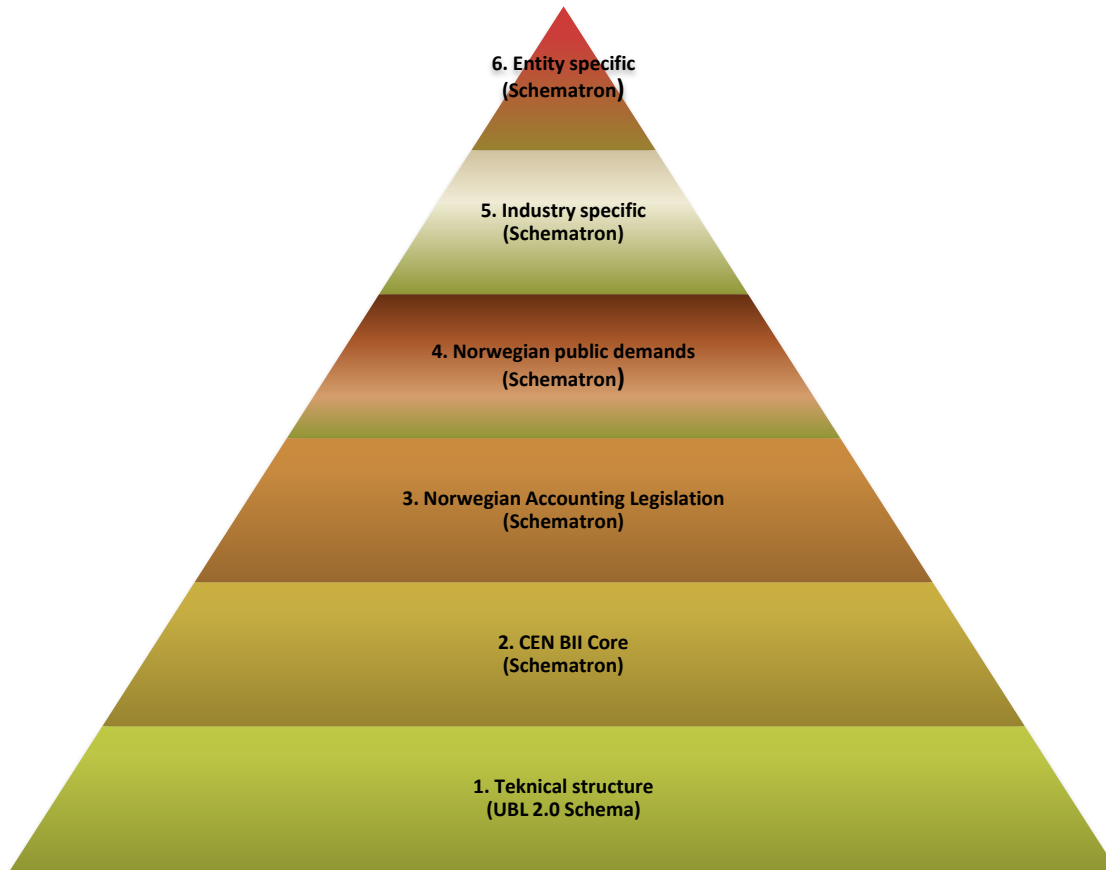


Figure 1 Different levels of validation

The table below describes the levels of validation depending on the issuer’s origin and if the receiver is private or public. The messages from international suppliers to Norwegian public sector will only be validated at level 1 and 2, while, if it is from a Norwegian supplier, all Norwegian requirements will be applicable. The validation will take place at all four levels from 1 to 4.

Issuer of invoice and credit note	Receiver Norwegian private sector	Receiver Norwegian public sector
Foreign	1, 2 possibly 5 and 6	1, 2
Norwegian	1, 2, 3 possibly 5 and 6	1, 2, 3, 4

Parties, who make use of Difi’s invoice Web portal for manual registration of messages, are validated at registration.

The result from Schematron validation may be one of the following:

The document contains both error and warning

- The document contains errors
- The document contains warning
- The document contains no error or warning

If the document contains an error in one of the validation processes, it will be rejected. The issuer will be informed so that the document can be sent again. A warning is for information only, and has no impact on the exchange.

3.3 INVOICE PROCESS AND USE OF CEN BII PROFILES

The issuer starts the billing process initiated as a result of purchases of goods or consumption of services. Sequence diagram of the billing process is shown in the figure below. This process is based on profile 5 in CENBII (BII05 - Billing)⁵. This profile assumes that both invoice and credit note is sent electronically.

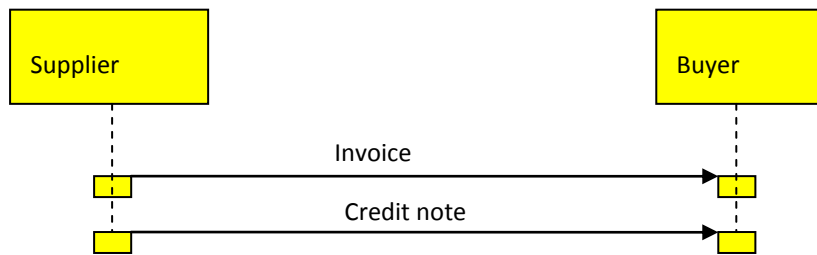


Figure 2 Invoice process

3.4 AGREEMENT

It is not necessary to conclude a formal agreement between issuer and receiver, but to make the technical exchange functional one is dependent on the invoice receiver having a system which can treat messages made according to specification in this implementation guide. The issuer must validate messages towards the specifications.

3.5 RETURN OF INVOICE

A return of electronic invoices is not added. If return is desired, manual handling is encouraged.

3.6 ADDRESSING

For the supplier to be able to send an invoice to the right buyer, it is important that the invoice contains the organization number of the right recipient (legal recipient). This requires that the mandatory element “buyer’s organization number” is included.

⁵ <http://www.cen.eu/cwa/bii/specs/Profiles/IndexWG1.html>

3.7 ENVELOPE

To ensure effective and secure addressing the Ehandel.no format will use a defined envelope. Use of envelope enables routing of messages without reading the actual content in the message. Important items in an envelope are the issuer's unique delivery address, date, time and type of message. The envelope specification is not ready yet.

3.8 FUTURE CHANGES

Difi reserves the right to change current format into a new format if necessary. The transition to a new format will be notified at least 18 months in advance. It may also be necessary to upgrade a current format into new versions. Difi will in advance give the issuer 6 months warning to get an upgrade. It is the issuer's responsibility to enable the upgrade in due time.

4 USE OF SIGNIFICANT ITEMS IN EHANDEL.NO FORMAT

4.1 USE OF PARTIES

Following parties used in format:

Operators	Comments
AccountingSupplierParty	Supplier is mandatory information in Ehandels.no format
AccountingCustomerParty	Buyer (customer) is mandatory information in Ehandel.no format
PayeeParty	Payee party is optional information in Ehandel.no format

4.2 USE OF SUPPLIER AND BUYER REFERENCE

"Your ref" is a mandatory buyer reference. "Our ref" is a mandatory supplier reference.

4.3 VAT

VAT rates used in Norway today are 0, 8, 14, 25 percent. VAT shall appear on head level and line level. VAT rate on line level appears in percent, while VAT on head level appears in both percent and value. VAT base must also appear on head level.

For tax free goods or services, the VAT rate used will be 0.

4.4 SPECIAL TAX

If there is a need to specify a special tax, this must be done by setting a separate line. The only legal tax code is VAT. If special tax is not specified, it is included in the amount.

4.5 ORDER/BILLING NUMBER

To make efficient handling of electronic invoice for public sector, order and billing number should be assigned by buyer and notified in the invoice.

If the order number is stated on the head level, it is assumed that the invoice is based only on an order. Order reference in line level will only refer to the actual order line.

If the invoice is based on several orders, order reference will only be provided on line level. The order reference on line level then must refer to both the order and the appropriate order lines. The syntax for how this is set, should be agreed by the parties.

4.6 CONTRACT NUMBER

To back trace the signed contract of a purchase, the contract number should be set if a contract has been established between the parties.

4.7 ACCOUNTING COST

There is often a need for the receiver to post the invoice into the accounting system. An accounting string is recommended sent on line level provided that the supplier has received the accounting string from the buyer. An accounting string enables automatic posting in the accounting system.

4.8 APPENDIX

Graphics, image or other disclosures can be an appendix to an invoice. The appendix can then be sent as a binary object associated with the message, or by sending a reference to the place where the appendix is stored, such as a URL.

5 EXAMPLE OF INVOICE AND CREDIT NOTE

5.1 INVOICE

Below is an example of an invoice layout. It covers the mandatory fields which are required according to the international standard and the Norwegian demands. It also contains the recommended fields that should be there to improve better interaction between operators. For those who want to see all the data items in an invoice message, we refer to the appendix.

Artikkelnr.	Beskrivelse	Konteringstreng	Antall	Enhet	Ordrefref.	Mva	Pris	Linjebeløp
12345670	Testprodukt-1	200500600	2	Pakker	5	25%	200,00	400,00
24683432	Testprodukt-2	200900600	20	Art.	7	25%	150,00	3000,00
23456785	Matprodukt-1	200600700	8	Kilo	8	14%	100,00	800,00
Totalt linjebeløp før MVA:								4200,00
						MVA grunnlag	MVA	MVA beløp
						3400,00	25%	850,00
						800,00	14%	112,00
Totalt MVA:								962,00
Totalsum:								5162,00

Kvittering	
Innbetalt til konto 0005 00 11111	Beløp 5162,00
Betalerens kontonummer	

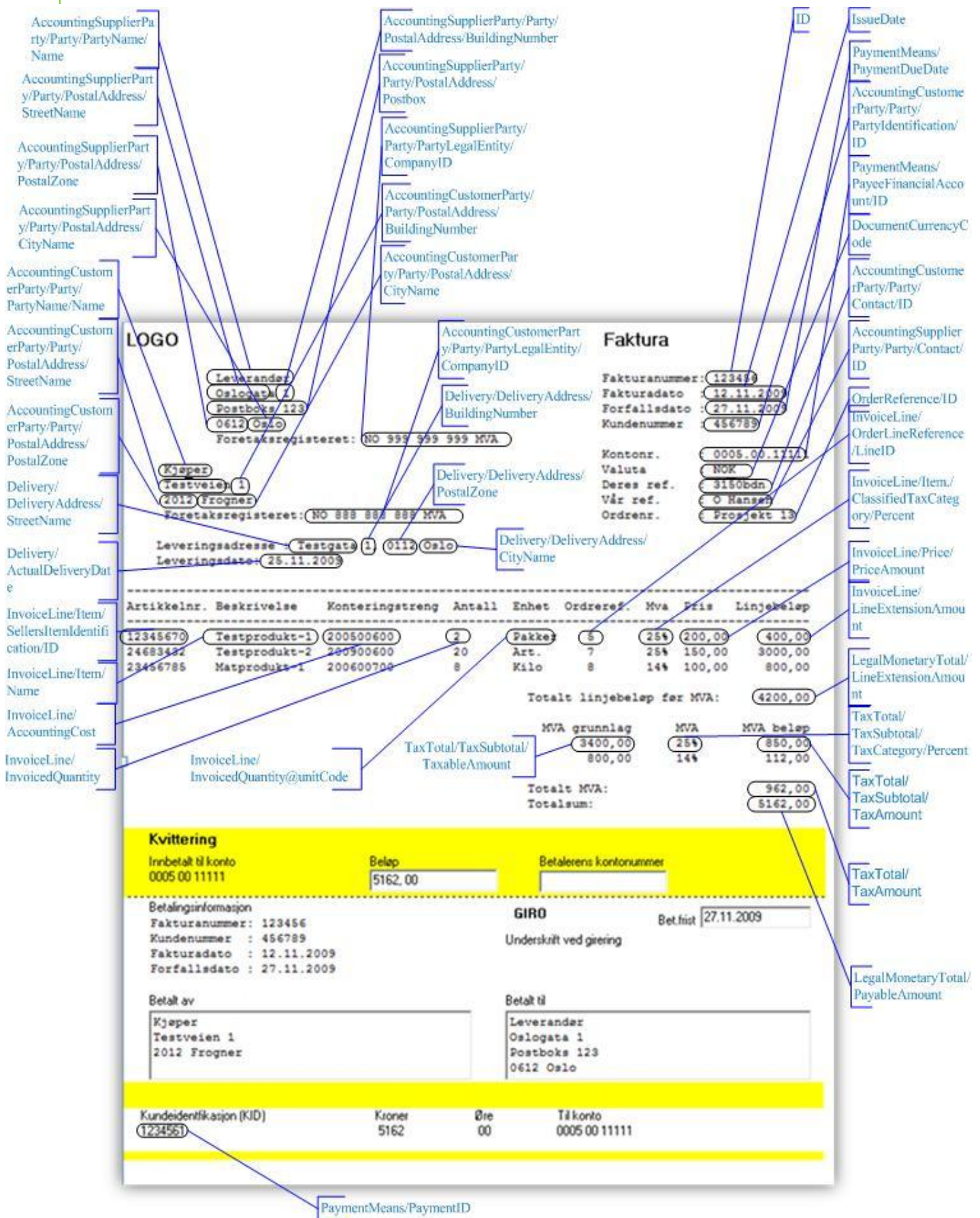
Betalingsinformasjon Fakturanummer: 123456 Kundenummer : 456789 Fakturadato : 12.11.2009 Forfallsdato : 27.11.2009	GIRO Underskrift ved giring Bet.frist 27.11.2009
--	---

Betalt av Kjøper Testveien 1 2012 Frogner	Betalt til Leverander Oslogata 1 Postboks 123 0612 Oslo
--	---

Kundeidentifikasjon (KID) 1234561	Kroner 5162	Øre 00	Til konto 0005 00 11111
--------------------------------------	----------------	-----------	----------------------------

Figure 3 Invoice

5.1.1 INVOICE WITH XPATH TO INVOICE FORMAT



5.1.2 TABEL WITH XPATH TO FORMAT AND E2B

Field in paper invoice	Xpath in BII invoice	Xpath in e2b invoice
Supplier name	AccountingSupplierParty/Party/PartyName/Name	InvoiceHeader/Supplier/Name
Supplier street name	AccountingSupplierParty/Party/PostalAddress/StreetName	InvoiceHeader/Supplier/StreetAddress/Address1
Supplier building no	AccountingSupplierParty/Party/PostalAddress/BuildingNumber	InvoiceHeader/Supplier/StreetAddress/Address1
Supplier post box	AccountingSupplierParty/Party/PostalAddress/Postbox	InvoiceHeader/Supplier/PostalAddress/Address1
		InvoiceHeader/Supplier/PostalAddress/PostalCode ELLER
Supplier postal zone	AccountingSupplierParty/Party/PostalAddress/PostalZone	InvoiceHeader/Supplier/StreetAddress/PostalCode
		InvoiceHeader/Supplier/PostalAddress/PostalDistrict ELLER
Supplier city name	AccountingSupplierParty/Party/PostalAddress/CityName	InvoiceHeader/Supplier/StreetAddress/PostalDistrict
Supplier organization number	AccountingSupplierParty/Party/PartyLegalEntity/CompanyID	InvoiceHeader/Supplier/OrgNumber
Invoice number	ID	InvoiceHeader/InvoiceNumber
Customer number	AccountingCustomerParty/Party/PartyIdentification/ID	InvoiceHeader/Buyer/PartyId
Issue date	IssueDate	InvoiceHeader/InvoiceDate
Payment due date	PaymentMeans/PaymentDueDate	InvoiceHeader/Payment/DueDate
Account number	PaymentMeans/PayeeFinancialAccount/ID	InvoiceHeader/Supplier/AccountInformation/AccountNumber
Currency	DocumentCurrencyCode	InvoiceHeader/Payment/Currency
Your ref.	AccountingCustomerParty/Party/Contact/ID	InvoiceHeader/Buyer/ContactPerson/Name
Our ref.	AccountingSupplierParty/Party/Contact/ID	InvoiceHeader/Supplier/ContactPerson/Name
Order number	OrderReference/ID	InvoiceHeader/InvoiceReferences/BuyersOrderNumber
Buyers name	AccountingCustomerParty/Party/PartyName/Name	InvoiceHeader/Buyer/Name
Buyers street name	AccountingCustomerParty/Party/PostalAddress/StreetName	InvoiceHeader/Buyer/StreetAddress/Address1
Buyers building number	AccountingCustomerParty/Party/PostalAddress/BuildingNumber	InvoiceHeader/Buyer/StreetAddress/Address1
		InvoiceHeader/Buyer/StreetAddress/PostalCode Eller
Buyers postal zone	AccountingCustomerParty/Party/PostalAddress/PostalZone	InvoiceHeader/Buyer/PostalAddress/PostalCode
		InvoiceHeader/Buyer/StreetAddress/PostalDistrict Eller
Buyers city name	AccountingCustomerParty/Party/PostalAddress/CityName	InvoiceHeader/Buyer/PostalAddress/PostalDistrict
Buyers organization no	AccountingCustomerParty /Party/PartyLegalEntity/CompanyID	InvoiceHeader/Buyer/OrgNumber
Item identification	InvoiceLine/Item/SellersItemIdentification/ID	InvoiceDetails/BaselItemDetails/SuppliersProductId
Item description	InvoiceLine/Item/Name	InvoiceDetails/BaselItemDetails/Description
Accounting cost (string)	InvoiceLine/AccountingCost	InvoiceDetails/BaselItemDetails/PostingInformation
Quantity	InvoiceLine/InvoicedQuantity	InvoiceDetails/BaselItemDetails/QuantityInvoiced
Unit code	InvoiceLine/InvoicedQuantity@Unitcode	InvoiceDetails/BaselItemDetails/UnitOfMeasure
Order line reference	InvoiceLine/OrdreLineReference/LineID	InvoiceDetails/BaselItemDetails/OrderInformation/LineNum

VAT percent (line level)	InvoiceLine/Item/ClassifiedTaxCategory/Percent	InvoiceDetails/BaselItemDetails/VatInfo/VatPrecent
Price	InvoiceLine/Price/PriceAmount	InvoiceDetails/BaselItemDetails/UnitPrice
Line amount	InvoiceLine/LineExtensionAmount	InvoiceDetails/BaselItemDetails/LinelItemAmount
Total line amount before VAT	LegalMonetaryTotal/LineExtensionAmount	InvoiceSummary/InvoiceTotals/LinelItemTotalsAmount
VAT percent	TaxTotal/TaxSubtotal/TaxCategory/Percent	InvoiceSummary/VatTotalsInfo/VatPrecent
VAT base amount	TaxTotal/TaxSubtotal/TaxableAmount	InvoiceSummary/VatTotalsInfo/VatBaseAmount
VAT amount	TaxTotal/TaxSubtotal/TaxAmount	InvoiceSummary/VatTotalsInfo/VatAmount
Total VAT	TaxTotal/TaxAmount	InvoiceSummary/InvoiceTotals/VatTotalsAmount
Total amount	LegalMonetaryTotal/PayableAmount	InvoiceSummary/InvoiceTotals/GrossAmount
KID	PaymentMeans/PaymentID	InvoiceHeader/Payment/KidNumber

5.1.3 XML EXAMPLE

```
<?xml version="1.0" encoding="UTF-8"?>
<?xml-stylesheet type='text/xsl' href='EHF-faktura_små.xslt'?>
<!--Sample XML file generated by XMLSpy v2010 (http://www.altova.com)-->
<Invoice xsi:schemaLocation="urn:oasis:names:specification:ubl:schema:xsd:Invoice-2 UBL-Invoice-2.0.xsd"
xmlns="urn:oasis:names:specification:ubl:schema:xsd:Invoice-2"
xmlns:xsi="http://www.w3.org/2001/XMLSchema-instance"
xmlns:cac="urn:oasis:names:specification:ubl:schema:xsd:CommonAggregateComponents-2"
xmlns:cbc="urn:oasis:names:specification:ubl:schema:xsd:CommonBasicComponents-2"
xmlns:ext="urn:oasis:names:specification:ubl:schema:xsd:CommonExtensionComponents-2">
  <cbc:UBLVersionID>2.0</cbc:UBLVersionID>
  <cbc:CustomizationID>urn:www.cenbii.eu:transaction:BiiCoreTrdm001:ver1.0:extentionId</cbc:CustomizationID>
  <cbc:ProfileID>urn:www.cenbii.eu:profiles:profile5:ver1.0</cbc:ProfileID>
  <cbc:ID>123456</cbc:ID>
  <cbc:IssueDate>2009-11-12</cbc:IssueDate>
  <cbc:DocumentCurrencyCode>NOK</cbc:DocumentCurrencyCode>
  <cac:OrderReference>
    <cbc:ID>Prosjekt 13</cbc:ID>
  </cac:OrderReference>
  <cac:ContractDocumentReference>
    <cbc:ID>K987654321</cbc:ID>
  </cac:ContractDocumentReference>
  <cac:AccountingSupplierParty>
    <cac:Party>
      <cac:PartyName>
        <cbc:Name>Leverandør</cbc:Name>
      </cac:PartyName>
      <cac:PostalAddress>
        <cbc:Postbox>Postboks 123</cbc:Postbox>
        <cbc:StreetName>Oslogate</cbc:StreetName>
        <cbc:BuildingNumber>1</cbc:BuildingNumber>
        <cbc:CityName>Oslo</cbc:CityName>
        <cbc:PostalZone>0612</cbc:PostalZone>
        <cac:Country>
          <cbc:IdentificationCode>NO</cbc:IdentificationCode>
        </cac:Country>
      </cac:PostalAddress>
      <cac:PartyLegalEntity>
        <cbc:CompanyID>NO999999999MVA</cbc:CompanyID>
      </cac:PartyLegalEntity>
      <cac:Contact>
        <cbc:ID>O Hansen</cbc:ID>
      </cac:Contact>
    </cac:Party>
  </cac:AccountingSupplierParty>
  <cac:AccountingCustomerParty>
    <cac:Party>
      <cac:PartyIdentification>
        <cbc:ID>456789</cbc:ID>
      </cac:PartyIdentification>
      <cac:PartyName>
        <cbc:Name>Kjøper</cbc:Name>
      </cac:PartyName>
      <cac:PostalAddress>
        <cbc:StreetName>Testveien</cbc:StreetName>
        <cbc:BuildingNumber>1</cbc:BuildingNumber>
        <cbc:CityName>Frogner</cbc:CityName>
        <cbc:PostalZone>2012</cbc:PostalZone>
        <cac:Country>
```

```

        <cbc:IdentificationCode>NO</cbc:IdentificationCode>
      </cac:Country>
    </cac:PostalAddress>
    <cac:PartyLegalEntity>
      <cbc:CompanyID>NO888888888MVA</cbc:CompanyID>
    </cac:PartyLegalEntity>
    <cac:Contact>
      <cbc:ID>3150bdn</cbc:ID>
    </cac:Contact>
  </cac:Party>
</cac:AccountingCustomerParty>
<cac:Delivery>
  <cbc:ActualDeliveryDate>2009-11-25</cbc:ActualDeliveryDate>
  <cac:DeliveryAddress>
    <cbc:StreetName>Testgata</cbc:StreetName>
    <cbc:BuildingNumber>1</cbc:BuildingNumber>
    <cbc:CityName>Oslo</cbc:CityName>
    <cbc:PostalZone>0112</cbc:PostalZone>
  </cac:DeliveryAddress>
</cac:Delivery>
<cac:PaymentMeans>
  <cbc:PaymentMeansCode>31</cbc:PaymentMeansCode>
  <cbc:PaymentDueDate>2009-11-27</cbc:PaymentDueDate>
  <cbc:PaymentID>1234561</cbc:PaymentID>
  <cac:PayeeFinancialAccount>
    <cbc:ID schemeID="BANK">0005.00.11111</cbc:ID>
  </cac:PayeeFinancialAccount>
</cac:PaymentMeans>
<cac:TaxTotal>
  <cbc:TaxAmount currencyID="NOK">962.0</cbc:TaxAmount>
  <cac:TaxSubtotal>
    <cbc:TaxableAmount currencyID="NOK">3400.0</cbc:TaxableAmount>
    <cbc:TaxAmount currencyID="NOK">850.0</cbc:TaxAmount>
    <cac:TaxCategory>
      <cbc:ID>S</cbc:ID>
      <cbc:Percent>25.0</cbc:Percent>
      <cac:TaxScheme>
        <cbc:ID>VAT</cbc:ID>
      </cac:TaxScheme>
    </cac:TaxCategory>
  </cac:TaxSubtotal>
</cac:TaxSubtotal>
  <cbc:TaxableAmount currencyID="NOK">800.0</cbc:TaxableAmount>
  <cbc:TaxAmount currencyID="NOK">112.0</cbc:TaxAmount>
  <cac:TaxCategory>
    <cbc:ID>AA</cbc:ID>
    <cbc:Percent>14.0</cbc:Percent>
    <cac:TaxScheme>
      <cbc:ID>VAT</cbc:ID>
    </cac:TaxScheme>
  </cac:TaxCategory>
</cac:TaxSubtotal>
</cac:TaxTotal>
<cac:LegalMonetaryTotal>
  <cbc:LineExtensionAmount currencyID="AED">4200.0</cbc:LineExtensionAmount>
  <cbc:TaxExclusiveAmount currencyID="AED">4200.0</cbc:TaxExclusiveAmount>
  <cbc:TaxInclusiveAmount currencyID="AED">5162.0</cbc:TaxInclusiveAmount>
  <cbc:PayableAmount currencyID="AED">5162.0</cbc:PayableAmount>
</cac:LegalMonetaryTotal>
</cac:InvoiceLine>

```

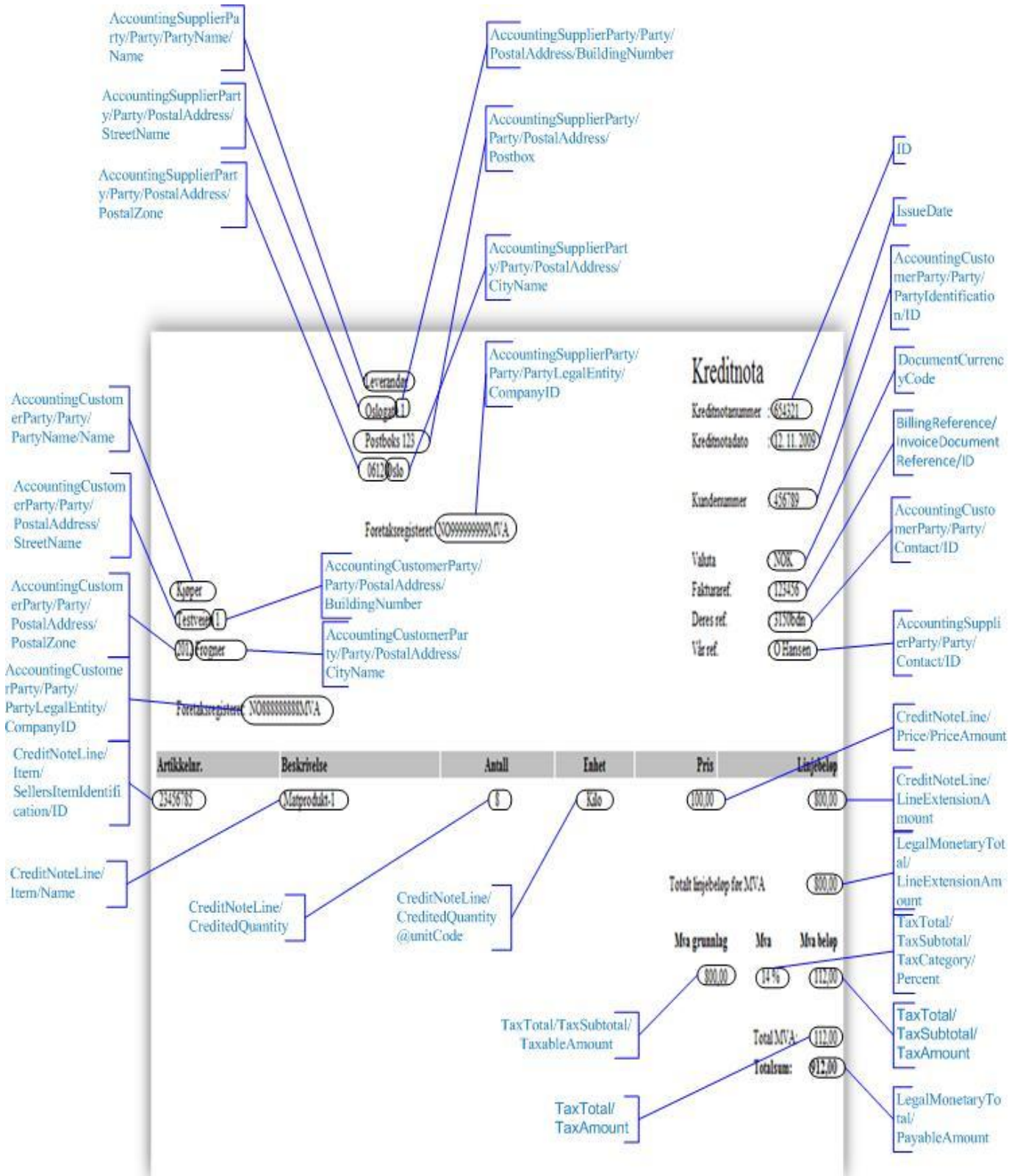
```

<cbc:ID>1</cbc:ID>
<cbc:InvoicedQuantity unitCode="NMP">2</cbc:InvoicedQuantity>
<cbc:LineExtensionAmount currencyID="NOK">400.0</cbc:LineExtensionAmount>
<cbc:AccountingCost>200500600</cbc:AccountingCost>
<cac:OrderLineReference>
  <cbc:LineID>5</cbc:LineID>
</cac:OrderLineReference>
<cac:TaxTotal>
  <cbc:TaxAmount currencyID="NOK">100.0</cbc:TaxAmount>
</cac:TaxTotal>
<cac:Item>
  <cbc:Name>Testprodukt-1</cbc:Name>
  <cac:SellertItemIdentification>
    <cbc:ID>12345670</cbc:ID>
  </cac:SellertItemIdentification>
  <cac:ClassifiedTaxCategory>
    <cbc:ID>S</cbc:ID>
    <cbc:Percent>25.0</cbc:Percent>
    <cac:TaxScheme>
      <cbc:ID>VAT</cbc:ID>
    </cac:TaxScheme>
  </cac:ClassifiedTaxCategory>
</cac:Item>
<cac:Price>
  <cbc:PriceAmount currencyID="NOK">200.0</cbc:PriceAmount>
</cac:Price>
</cac:InvoiceLine>
<cac:InvoiceLine>
  <cbc:ID>2</cbc:ID>
  <cbc:InvoicedQuantity unitCode="NAR">20</cbc:InvoicedQuantity>
  <cbc:LineExtensionAmount currencyID="NOK">3000.0</cbc:LineExtensionAmount>
  <cbc:AccountingCost>200900600</cbc:AccountingCost>
  <cac:OrderLineReference>
    <cbc:LineID>7</cbc:LineID>
  </cac:OrderLineReference>
  <cac:TaxTotal>
    <cbc:TaxAmount currencyID="NOK">750.0</cbc:TaxAmount>
  </cac:TaxTotal>
  <cac:Item>
    <cbc:Name>Testprodukt-2</cbc:Name>
    <cac:SellertItemIdentification>
      <cbc:ID>24683432</cbc:ID>
    </cac:SellertItemIdentification>
    <cac:ClassifiedTaxCategory>
      <cbc:ID>S</cbc:ID>
      <cbc:Percent>25.0</cbc:Percent>
      <cac:TaxScheme>
        <cbc:ID>VAT</cbc:ID>
      </cac:TaxScheme>
    </cac:ClassifiedTaxCategory>
  </cac:Item>
  <cac:Price>
    <cbc:PriceAmount currencyID="NOK">150.0</cbc:PriceAmount>
  </cac:Price>
</cac:InvoiceLine>
<cac:InvoiceLine>
  <cbc:ID>3</cbc:ID>
  <cbc:InvoicedQuantity unitCode="KGM">8</cbc:InvoicedQuantity>
  <cbc:LineExtensionAmount currencyID="NOK">800.0</cbc:LineExtensionAmount>
  <cbc:AccountingCost>200600700</cbc:AccountingCost>

```

```
<cac:OrderLineReference>
  <cbc:LineID>8</cbc:LineID>
</cac:OrderLineReference>
<cac:TaxTotal>
  <cbc:TaxAmount currencyID="NOK">112.0</cbc:TaxAmount>
</cac:TaxTotal>
<cac:Item>
  <cbc:Name>Matprodukt-1</cbc:Name>
  <cac:SellertoolsItemIdentification>
    <cbc:ID>23456785</cbc:ID>
  </cac:SellertoolsItemIdentification>
  <cac:ClassifiedTaxCategory>
    <cbc:ID>AA</cbc:ID>
    <cbc:Percent>14.0</cbc:Percent>
    <cac:TaxScheme>
      <cbc:ID>VAT</cbc:ID>
    </cac:TaxScheme>
  </cac:ClassifiedTaxCategory>
</cac:Item>
<cac:Price>
  <cbc:PriceAmount currencyID="NOK">100.0</cbc:PriceAmount>
</cac:Price>
</cac:InvoiceLine>
</Invoice>
```


5.2.1 CREDIT NOTE WITH XPATH TO THE CREDIT NOTE FORMAT



5.2.2 TABLE WITH XPATH TO THE FORMAT AND E2B

Field in credit note	Xpath in BII	Xpath in e2b
Supplier name	AccountingSupplierParty/Party/PartyName/Name	InvoiceHeader/Supplier/Name
Supplier street name	AccountingSupplierParty/Party/PostalAddress/StreetName	InvoiceHeader/Supplier/StreetAddress/Address1
Suppliers building number	AccountingSupplierParty/Party/PostalAddress/BuildingNumber	InvoiceHeader/Supplier/StreetAddress/Address1
Suppliers post box	AccountingSupplierParty/Party/PostalAddress/Postbox	InvoiceHeader/Supplier/PostalAddress/Address1
Suppliers postal zone	AccountingSupplierParty/Party/PostalAddress/PostalZone	InvoiceHeader/Supplier/PostalAddress/PostalCode ELLER InvoiceHeader/Supplier/StreetAddress/PostalCode
Supplier city name	AccountingSupplierParty/Party/PostalAddress/CityName	InvoiceHeader/Supplier/PostalAddress/PostalDistrict ELLER InvoiceHeader/Supplier/StreetAddress/PostalDistrict
Suppliers organization number	AccountingSupplierParty/Party/PartyLegalEntity/CompanyID	InvoiceHeader/Supplier/OrgNumber
Credit note number	ID	InvoiceHeader/InvoiceNumber
Customer number	AccountingCustomerParty/Party/PartyIdentification/ID	InvoiceHeader/Buyer/PartyId
Issue date	IssueDate	InvoiceHeader/InvoiceDate
Currency	DocumentCurrencyCode	InvoiceHeader/Payment/Currency
Invoice ref.	BillingReference/InvoiceDocumentReference/ID	InvoiceHeader/InvoiceReferences/InvoiceNumber
Your ref..	AccountingCustomerParty/Party/Contact/ID	InvoiceHeader/Buyer/ContactPerson/Name
Our ref.	AccountingSupplierParty/Party/Contact/ID	InvoiceHeader/Supplier/ContactPerson/Name
Buyers name	AccountingCustomerParty/Party/PartyName/Name	InvoiceHeader/Buyer/Name
Buyers street name	AccountingCustomerParty/Party/PostalAddress/StreetName	InvoiceHeader/Buyer/StreetAddress/Address1
Buyers building number	AccountingCustomerParty/Party/PostalAddress/BuildingNumber	InvoiceHeader/Buyer/StreetAddress/Address1
Buyers postal zone	AccountingCustomerParty/Party/PostalAddress/PostalZone	InvoiceHeader/Buyer/StreetAddress/PostalCode Eller InvoiceHeader/Buyer/PostalAddress/PostalCode
Buyers city name	AccountingCustomerParty/Party/PostalAddress/CityName	InvoiceHeader/Buyer/StreetAddress/PostalDistrict Eller InvoiceHeader/Buyer/PostalAddress/PostalDistrict
Buyers organization number	AccountingCustomerParty/Party/PartyLegalEntity/CompanyID	InvoiceHeader/Buyer/OrgNumber
Item identification	CreditNoteLine/Item/SellersItemIdentification/ID	InvoiceDetails/BaselItemDetails/SuppliersProductId
Item description	CreditNoteLine/Item/Name	InvoiceDetails/BaselItemDetails/Description
Quantity	CreditNoteLine/CreditedQuantity	InvoiceDetails/BaselItemDetails/QuantityInvoiced
Unit code	CreditNoteLine/ CreditedQuantity@Unitcode	InvoiceDetails/BaselItemDetails/UnitOfMeasure
Price	CreditNoteLine/Price/PriceAmount	InvoiceDetails/BaselItemDetails/UnitPrice
Line amount	CreditNoteLine/LineExtensionAmount	InvoiceDetails/BaselItemDetails/LineItemAmount
Total line amount before VAT	LegalMonetaryTotal/LineExtensionAmount	InvoiceSummary/InvoiceTotals/LineItemTotalsAmount
VAT percent	TaxTotal/TaxSubtotal/TaxCategory/Percent	InvoiceSummary/VatTotalsInfo/VatPrecent

VAT base	TaxTotal/TaxSubtotal/TaxableAmount	InvoiceSummary/VatTotalsInfo/VatBaseAmount
VAT amount	TaxTotal/TaxSubtotal/TaxAmount	InvoiceSummary/VatTotalsInfo/VatAmount
Total VAT	TaxTotal/TaxAmount	InvoiceSummary/InvoiceTotals/VatTotalsAmount
Total amount	LegalMonetaryTotal/PayableAmount	InvoiceSummary/InvoiceTotals/GrossAmount

5.2.3 XML EXAMPLE

```
<?xml version="1.0" encoding="UTF-8"?>
<?xml-stylesheet type='text/xsl' href='EHF-kreditnota_små.xslt'?>
<!--Sample XML file generated by XMLSpy v2010 (http://www.altova.com)-->
<CreditNote xsi:schemaLocation="urn:oasis:names:specification:ubl:schema:xsd:CreditNote-2 UBL-CreditNote-2.0.xsd" xmlns="urn:oasis:names:specification:ubl:schema:xsd:CreditNote-2"
xmlns:xsi="http://www.w3.org/2001/XMLSchema-instance"
xmlns:cac="urn:oasis:names:specification:ubl:schema:xsd:CommonAggregateComponents-2"
xmlns:cbc="urn:oasis:names:specification:ubl:schema:xsd:CommonBasicComponents-2"
xmlns:ext="urn:oasis:names:specification:ubl:schema:xsd:CommonExtensionComponents-2">
  <cbc:UBLVersionID>2.0</cbc:UBLVersionID>
  <cbc:CustomizationID>urn:www.cenbii.eu:transaction:BiiCoreTrdm001:ver1.0:extentionId</cbc:CustomizationID>
  <cbc:ProfileID>urn:www.cenbii.eu:profiles:profile5:ver1.0</cbc:ProfileID>
  <cbc:ID>654321</cbc:ID>
  <cbc:IssueDate>2009-11-12</cbc:IssueDate>
  <cbc:DocumentCurrencyCode>NOK</cbc:DocumentCurrencyCode>
  <cac:BillingReference>
    <cac:InvoiceDocumentReference>
      <cbc:ID>123456</cbc:ID>
    </cac:InvoiceDocumentReference>
  </cac:BillingReference>
  <cac:AccountingSupplierParty>
    <cac:Party>
      <cac:PartyName>
        <cbc:Name>Leverandør</cbc:Name>
      </cac:PartyName>
      <cac:PostalAddress>
        <cbc:Postbox>Postboks 123</cbc:Postbox>
        <cbc:StreetName>Oslogate</cbc:StreetName>
        <cbc:BuildingNumber>1</cbc:BuildingNumber>
        <cbc:CityName>Oslo</cbc:CityName>
        <cbc:PostalZone>0612</cbc:PostalZone>
        <cac:Country>
          <cbc:IdentificationCode>NO</cbc:IdentificationCode>
        </cac:Country>
      </cac:PostalAddress>
      <cac:PartyLegalEntity>
        <cbc:CompanyID>NO999999999MVA</cbc:CompanyID>
      </cac:PartyLegalEntity>
      <cac:Contact>
        <cbc:ID>O Hansen</cbc:ID>
      </cac:Contact>
    </cac:Party>
  </cac:AccountingSupplierParty>
  <cac:AccountingCustomerParty>
    <cac:Party>
      <cac:PartyIdentification>
        <cbc:ID>456789</cbc:ID>
      </cac:PartyIdentification>
      <cac:PartyName>
        <cbc:Name>Kjøper</cbc:Name>
      </cac:PartyName>
      <cac:PostalAddress>
        <cbc:StreetName>Testveien</cbc:StreetName>
        <cbc:BuildingNumber>1</cbc:BuildingNumber>
        <cbc:CityName>Frogner</cbc:CityName>
        <cbc:PostalZone>2012</cbc:PostalZone>
        <cac:Country>
          <cbc:IdentificationCode>NO</cbc:IdentificationCode>
        </cac:Country>
      </cac:PostalAddress>
    </cac:Party>
  </cac:AccountingCustomerParty>
</CreditNote>
```

```

        </cac:Country>
    </cac:PostalAddress>
    <cac:PartyLegalEntity>
        <cbc:CompanyID>NO888888888MVA</cbc:CompanyID>
    </cac:PartyLegalEntity>
    <cac:Contact>
        <cbc:ID>3150bdn</cbc:ID>
    </cac:Contact>
</cac:Party>
</cac:AccountingCustomerParty>
<cac:TaxTotal>
    <cbc:TaxAmount currencyID="NOK">112.0</cbc:TaxAmount>
    <cac:TaxSubtotal>
        <cbc:TaxableAmount currencyID="NOK">800.0</cbc:TaxableAmount>
        <cbc:TaxAmount currencyID="NOK">112.0</cbc:TaxAmount>
        <cac:TaxCategory>
            <cbc:ID>AA</cbc:ID>
            <cbc:Percent>14.0</cbc:Percent>
            <cac:TaxScheme>
                <cbc:ID>VAT</cbc:ID>
            </cac:TaxScheme>
        </cac:TaxCategory>
    </cac:TaxSubtotal>
</cac:TaxTotal>
<cac:LegalMonetaryTotal>
    <cbc:LineExtensionAmount currencyID="AED">800.0</cbc:LineExtensionAmount>
    <cbc:TaxExclusiveAmount currencyID="AED">800.0</cbc:TaxExclusiveAmount>
    <cbc:TaxInclusiveAmount currencyID="AED">912.0</cbc:TaxInclusiveAmount>
    <cbc:PayableAmount currencyID="AED">912.0</cbc:PayableAmount>
</cac:LegalMonetaryTotal>
    <cac:CreditNoteLine>
        <cbc:ID>1</cbc:ID>
        <cbc:CreditedQuantity unitCode="KGM">8</cbc:CreditedQuantity>
        <cbc:LineExtensionAmount currencyID="NOK">800.0</cbc:LineExtensionAmount>
        <cac:TaxTotal>
            <cbc:TaxAmount currencyID="NOK">112.0</cbc:TaxAmount>
        </cac:TaxTotal>
        <cac:Item>
            <cbc:Name>Matprodukt-1</cbc:Name>
            <cac:SellersItemIdentification>
                <cbc:ID>23456785</cbc:ID>
            </cac:SellersItemIdentification>
            <cac:ClassifiedTaxCategory>
                <cbc:ID>S</cbc:ID>
                <cbc:Percent>14.0</cbc:Percent>
                <cac:TaxScheme>
                    <cbc:ID>VAT</cbc:ID>
                </cac:TaxScheme>
            </cac:ClassifiedTaxCategory>
        </cac:Item>
        <cac:Price>
            <cbc:PriceAmount currencyID="NOK">100.0</cbc:PriceAmount>
        </cac:Price>
    </cac:CreditNoteLine>
</CreditNote>

```

6 APPENDIX

6.1 APPENDIX 1 – STRUCTURE TABLES

Structure tables are enclosed and show all data elements in the format.

6.2 APPENDIX 2 – MESSAGE TABLES

Message tables are enclosed and describe data elements in the format.

Each data element has a description part and mapping part.

1. Description

XML TagName: XML tag name which is used in the standard

Definition: Definition of information content which is to be transferred

Example: It is an example of an XML element.

Requirement: Describes to which extent it is a requirement to send the item.

”Mandatory” means that the element must be included to satisfy the requirement to the XML syntax defined in the UBL 2.0 Schema and the Norwegian demand.

”Recommended” means that the element should be included to encourage efficiency and service between the parties.

”Optional” means that element is not required in the format. The issuer can choose whether or not to send the element.

Cardinality: It is information about the instance of the XML element

”0 .. 1” means zero or one instance

”0 .. unbounded” means zero or several instances

”1 .. 1” means one instance

”1 .. unbounded” means one or several instances

Rule: The rule of validation of the XML element.

Source: The source tells where the rule comes from

2. e2b mapping

XPath: XPath tells where in the e2b format an element can be mapped towards the Ehandel.no format.

Comment: Is additional information on mapping.

6.3 APPENDIX 3 – CODE LIST

Code lists are enclosed. Everyone has to use the same version of the code lists. To be specific, the currency codes must be maintained in accordance with an agreement with a maintenance organisation. Ehandel.no format invoices and credit notes are based on the use of the enclosed BII code list “BII_codelists-v1.00”.

6.4 APPENDIX 4 - UBL 2.0 SCHEMA

UBL 2.0 Schema is attached and shows the standard format that Ehandel.no invoices and credit notes are based on.

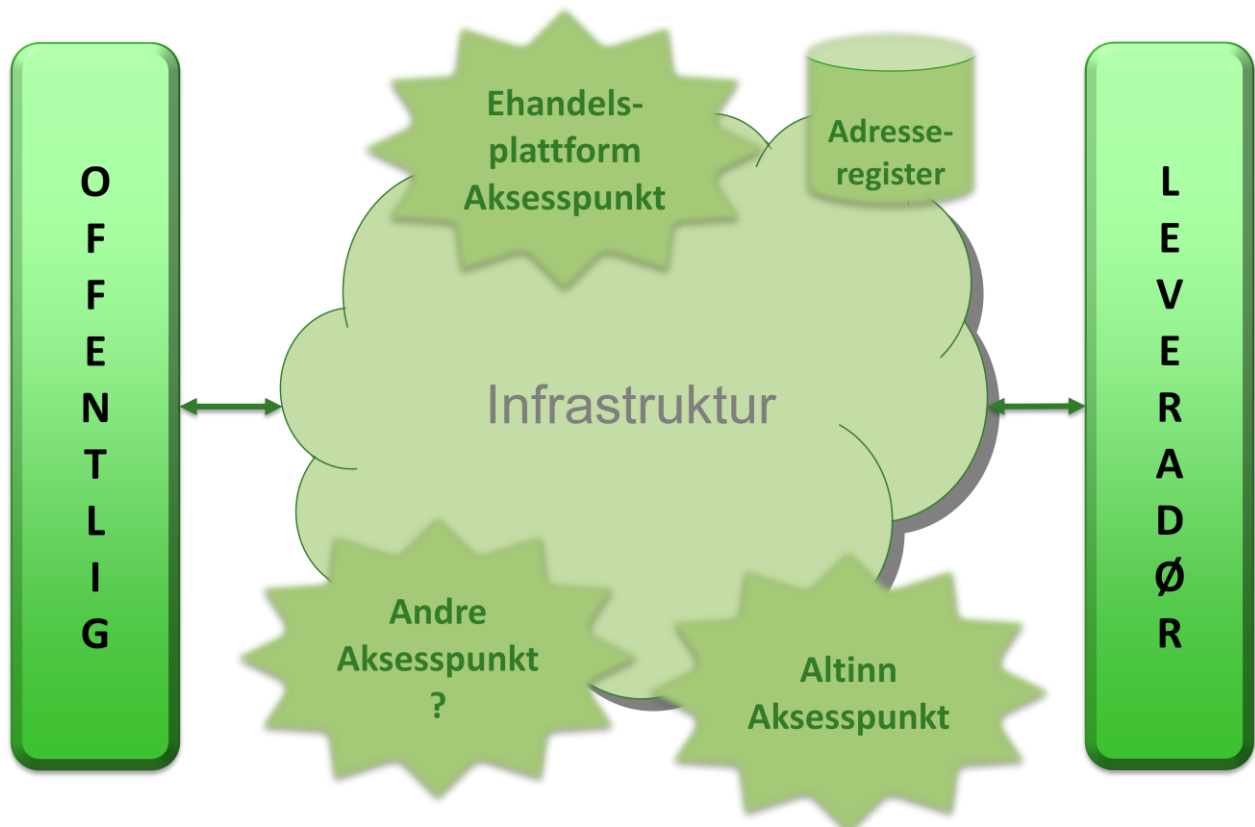
6.5 APPENDIX 5 - XML AND XSLT

XML example files are attached along with the XSLT files. These XSLT files must be found in the same folder as XML files for the display of XML to be correct. XML files can be opened in the browser or with suitable software.

6.6 APPENDIX 6 - MODEL OF EXCHANGE OF EHANDEL.NO FORMATS

For suppliers there are different models which can be used to bill the public sector. The chapter below describes the different models.

Invoice issuer may send billing information to the public sector directly, via the web, via the E-procurement platform or via the service provider. These messages are sent through the so-called access points that routes messages to the right receiver. It is currently only intended for two access points one through Altinn and one through the E-procurement platform, but in the future more access points will probably be established. The drawing below illustrates how this works.



Figur 5 Infrastruktur

6.6.1 DIRECTLY THROUGH THE E-PROCUREMENT PLATTFORM

The e-procurement platform is used in the public sector for ordering goods and services. This platform has an interface to ERP systems towards public sector and will produce invoices from medio November 2010.

6.6.2 USING A SERVICE PROVIDER

A service provider receives and transmits electronic messages. Invoice issuers and invoice receivers only need to deal with one party.

Through the use of service providers adaptations of a standard format can be simplified. If the standard format changes, it is sufficient to change the interface relative to the service provider, and not to everyone who sends the invoice.

6.6.3 WEB INVOICE PORTAL

The web invoice portal is an internet-based system. When an invoice shall be issued, the user must log on via a web interface manually, fill in relevant information, and retrieve basic information about the receiver. Then a draft invoice will be generated. This can be stored, retrieved and modified. The final invoice will be generated in standard format.

- Ehandel.no format

Simultaneously it can be generated accounting documentations for the issuer's accounting system.

For the issuer, web invoice will be similar to other independent systems that are not integrated with the economic system or order- and inventory system. The advantage is that the company will not have to invest in their own system and maintenance. A browser is all that is needed. Some manual work will be required to generate a web invoice.

6.6.4 DIRECTLY FROM INVOICE ISSUER TO ACCESS POINT (AP)

Invoice issuer may send the invoices directly to AP. Invoice issuer has to be authenticated before the delivery can be completed. AP will ensure that the invoice reaches the correct receiver.

6.7 APPENDIX 7 - IDENTIFIERS

Processing and transmission of electronic documents requires precise identifiers such as accounting supplier number, account number, references etc. It is therefore important to describe the requirements of the exchange, who the issuer is and whether the identifier is verifiable. The table below describes identifiers used in Ehandel.no format invoice and credit note.

Reference to IG	Requirement	Verification Yes/no/partially	Issuer of Identifier
Supplier organization no. in the Register of Business Enterprises.	Mandatory	Yes	Brønnøysund enhetsreg.
Buyer organization no. in the Register of Business Enterprises.	Mandatory	Yes	Brønnøysund enhetsreg.
Your ref.	Mandatory	No	Internal
Our ref.	Recommended	No	Internal
Order no.	Recommended	No	Internal
Suppliers bank account no.	Recommended	Partially	Suppliers bank
Payment ID./KID	Recommended	Partially	Internal

6.8 APPENDIX 8 – TEST FILES

Appendix 8 contains test files with expected results.